



2011-12 School Quality Snapshot

Dublin Elementary

Dublin Unified

7997 Vamac Rd., Dublin, CA 94568

Grades Offered: K - 5

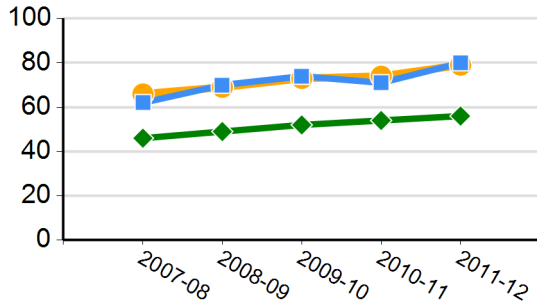
Enrollment: 567

Charter: No

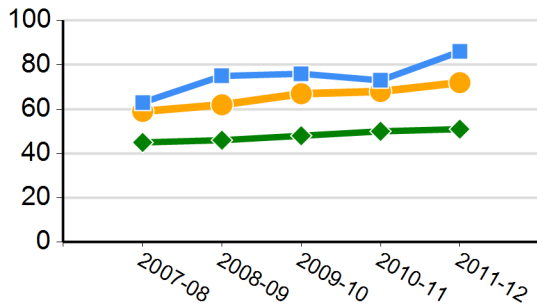
Title I Funded: Yes

CDS Code: 01-75093-6001374

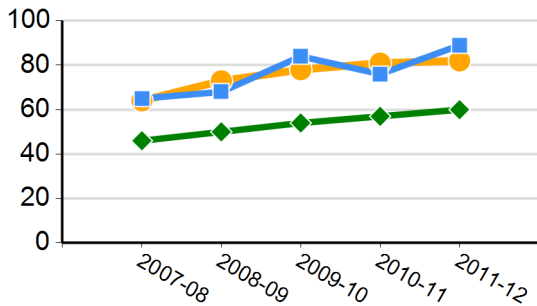
CST English-language Arts Results
(percent proficient and above)



CST Mathematics Results
(percent proficient and above)



CST Science Results
(percent proficient and above)



California's Academic Performance Index (API)

2012 Growth API	928
2011-12 Growth from Prior Year	50
Met Schoolwide Growth Target	Yes
All Student Groups Met Target	Yes
2011 Base API State Rank	8
2011 Base API Similar Schools Rank	2

API Subgroup Performance - 2012 API Growth

	Met Target	Growth
African American or Black		--
American Indian or Alaska Native		--
Asian	Yes	41
Filipino		--
Hispanic or Latino	Yes	95
Native Hawaiian or Pacific Islander		--
White	Yes	30
Two or More Races		--
English Learners	Yes	90
Socioeconomically Disadvantaged		--
Students with Disabilities		--

Green = Student group met target
 Red = Student group did not meet target
 Blue = Student group is not numerically significant
 -- = Not enough students to report

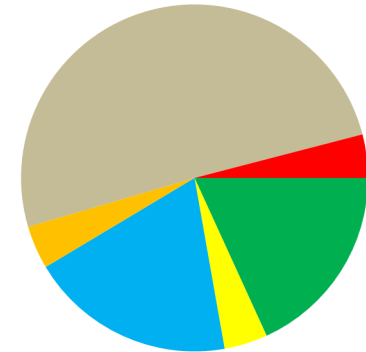
CHART LEGEND:

■ SCHOOL ● DISTRICT ◆ STATE

CST: CA Standards Test CDS: County-district-school

School and/or district information will not be displayed when data are not available or when data are representing fewer than 11 students.

2011-12 Enrollment by Race/Ethnicity

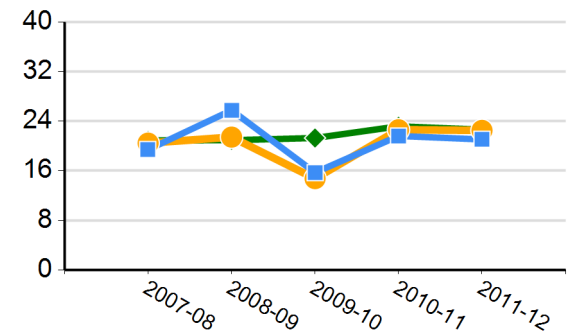


■ American Indian or Alaska Native ■ Hispanic or Latino
 ■ Asian ■ African American or Black
 ■ Native Hawaiian or Pacific Islander ■ White
 ■ Filipino ■ Two or More Races
 ■ Not Reported

2011-12 Subgroup Enrollment

English Learners	15%
Socioeconomically Disadvantaged	13%
Students with Disabilities	7%

Average Class Size





2011-12 School Quality Snapshot

Dublin Elementary

Dublin Unified

7997 Vamac Rd., Dublin, CA 94568

Grades Offered: K - 5

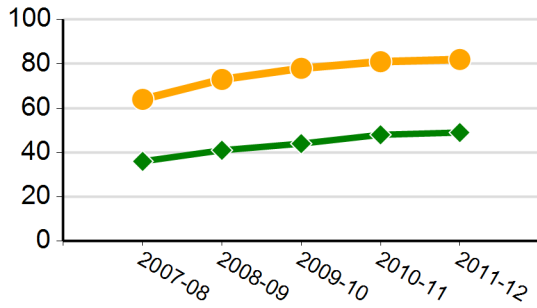
Enrollment: 567

Charter: No

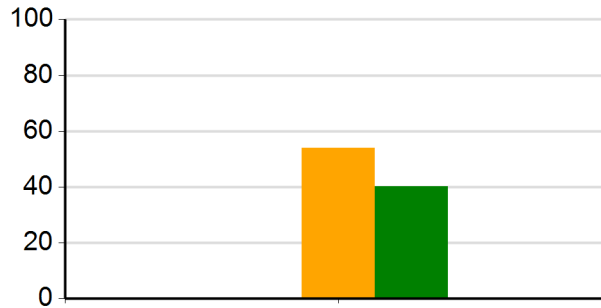
Title I Funded: Yes

CDS Code: 01-75093-6001374

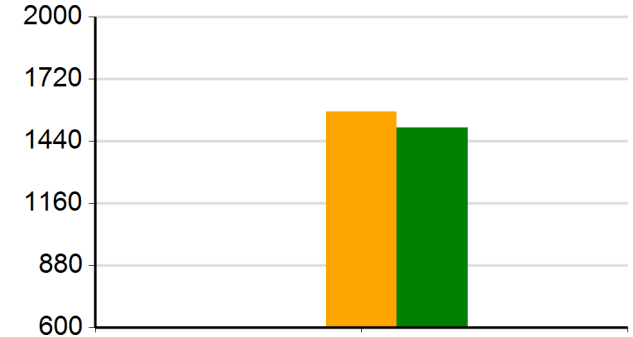
CST History/Social Science Results (percent proficient and above)



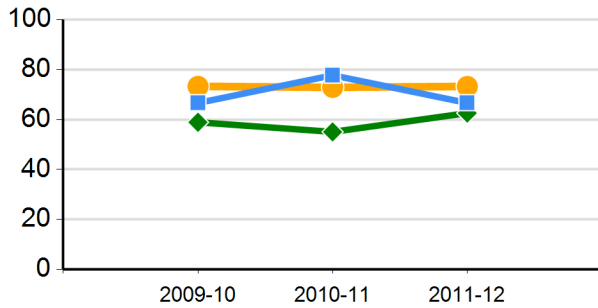
Percentage of 2010-11 Graduates Meeting University of California "a-g" Requirements



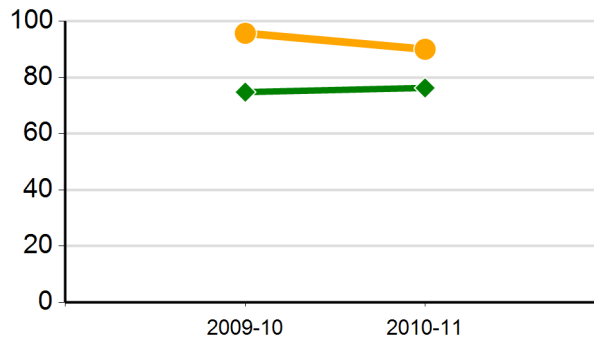
2010-11 Average SAT Score



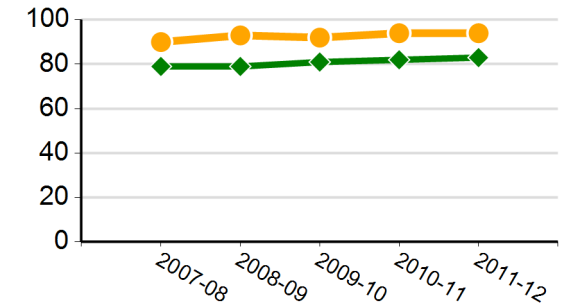
Percentage of English Learners Making Progress in Learning English



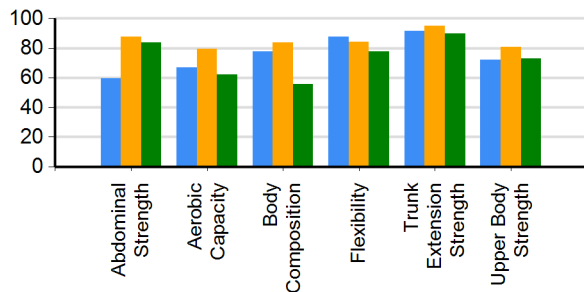
Cohort Graduation Rate*



CAHSEE English-Language Arts Grade 10 Passing Rate



Percentage of Students in the Healthy Fitness Zone in 2010-11



2010-11 Suspensions and Expulsions as a Percentage of Enrolled Students

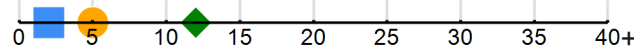


CHART LEGEND:

■ SCHOOL ● DISTRICT ◆ STATE

* Only two years of data are available

CAHSEE: CA High School Exit Examination

CST: CA Standards Test

School and/or district information will not be displayed when data are not available or when data are representing fewer than 11 students.

CAHSEE Mathematics Grade 10 Passing Rate

